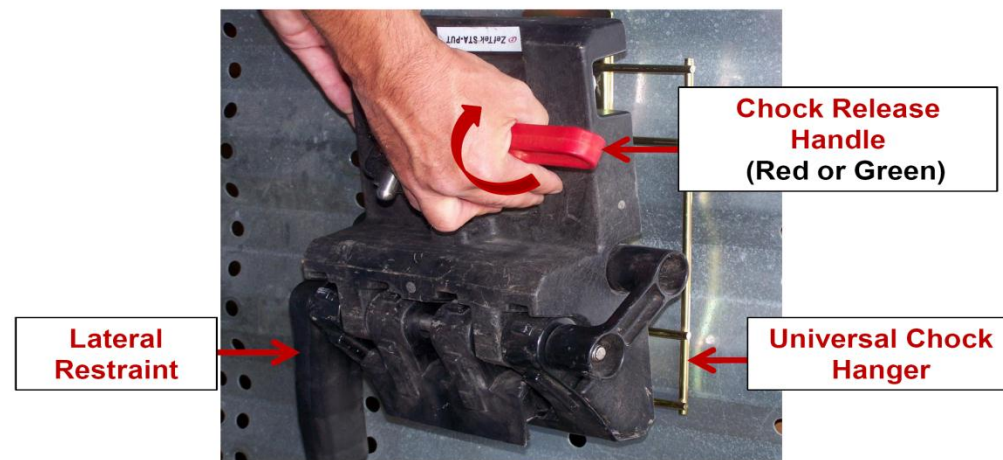


### Application: STEP 1



#### Remove the Sta-Put™ device from the side screen

**Step # 1:** Holding the **Chock Release Handle**, pull upward to release the Sta-Put™ device from the side screen **Universal Chock Hanger**.

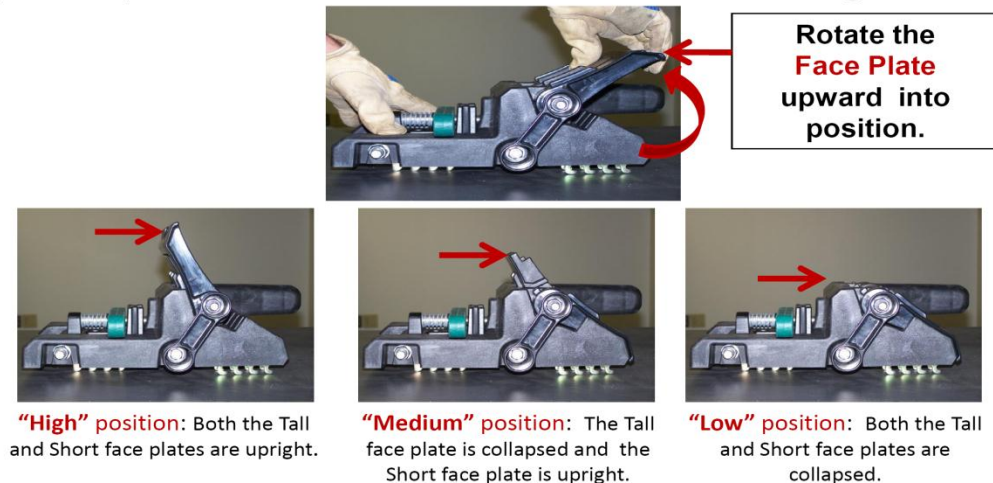


### Application: STEP 2



#### Rotate the Sta-Put™ face plate(s) into position

**Step # 2:** Rotate the Sta-Put™ **Face Plate(s)** into the highest acceptable position. (Follow the vehicle manufacturer and AAR clearance guidelines.)

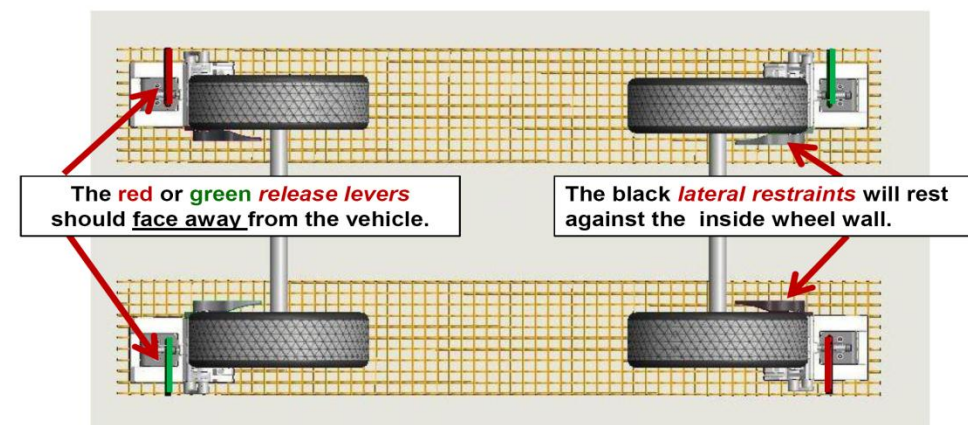


### Application: STEP 3



#### Placement of the Sta-Put™ Devices (4 per vehicle)

**Step # 3:** One (1) device is placed on the outboard side of each wheel. Four(4) devices are required per vehicle as shown below (2 Red, 2 Green).

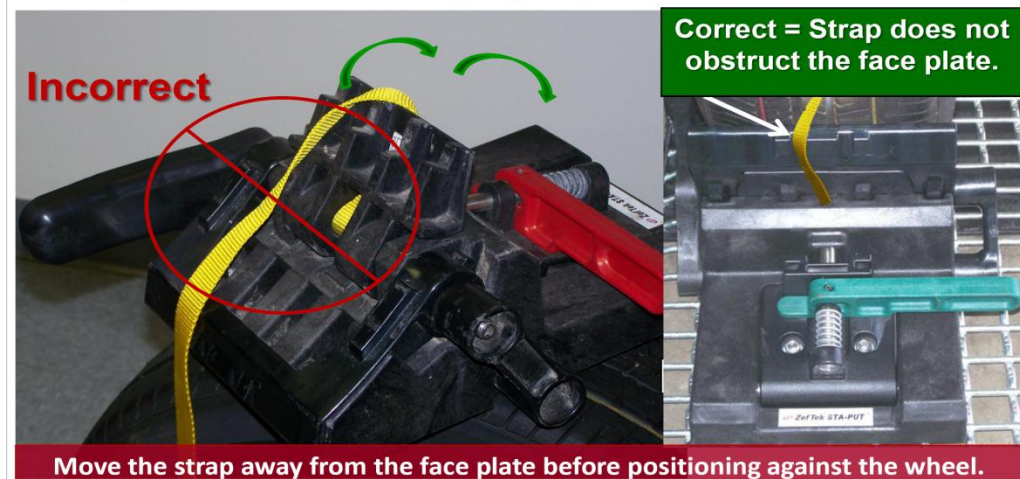


### Application: STEP 4



#### Position the Sta-Put™ strap.

**Step # 4:** Before positioning the Sta-Put™ against the wheel, ensure the strap does not obstruct the face plate.

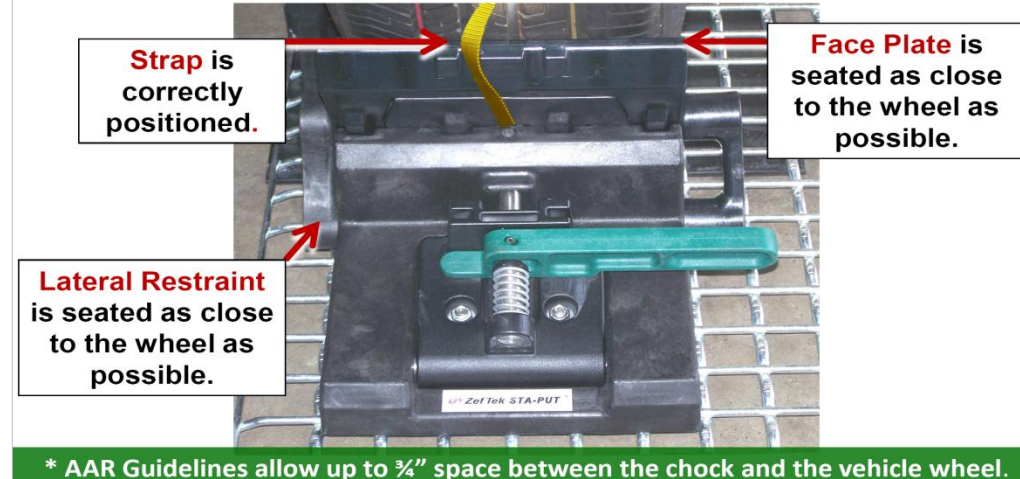


### Application: STEP 5



#### Position the Sta-Put™ device against the wheel.

**Step # 5:** Ensure both **Face Plate(s)** and the **Lateral Restraint** are seated as close to the wheel as possible.\*

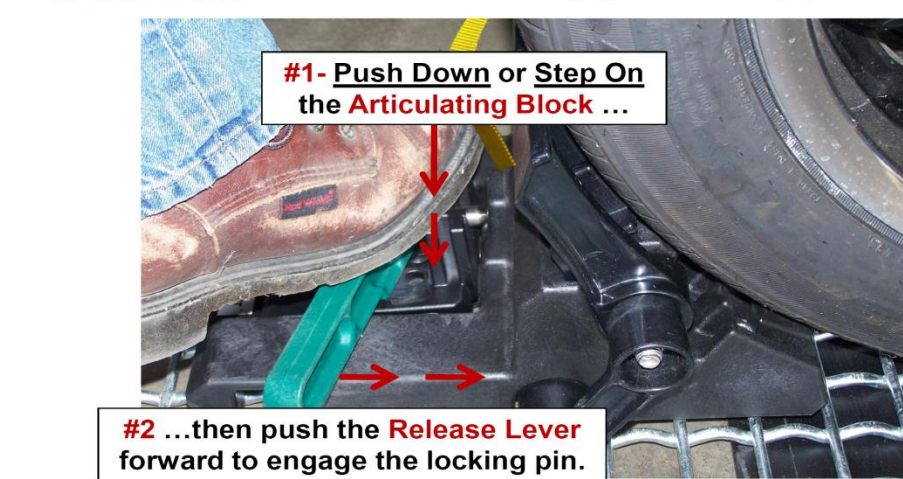


### Application: STEP 6



#### Use the Release Lever to engage the Locking Pin.

**Step # 6:** Push down or step on the black **Articulating Block**. Next, push the **Release Lever** toward the wheel to engage the locking pin.

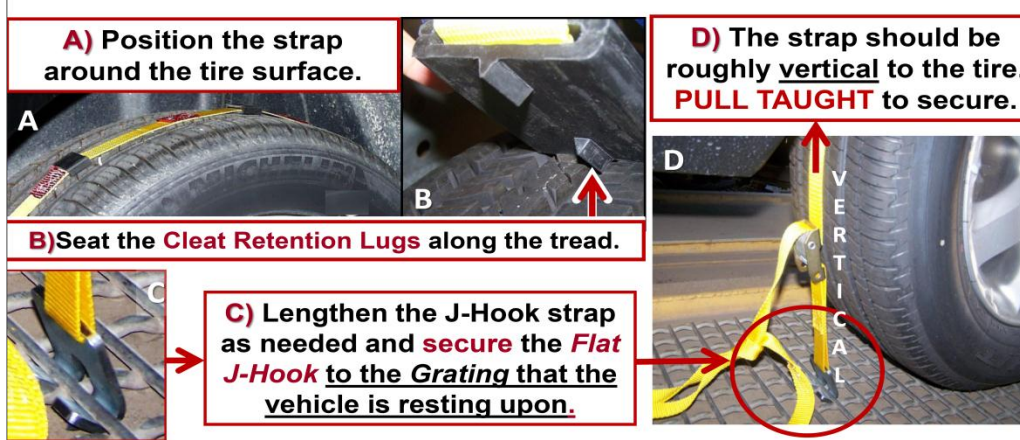


### Application: STEP 7



#### Position the Cleat Strap and Secure the J-Hook Strap

**Step # 7:** Position the Cleat Strap around the tire surface as shown below. Ensure the Cleat Retention Lugs engage the tire tread. Lengthen the J-Hook Strap as needed and affix the **Flat J-Hook** to the grating the vehicle is seated upon (approximately vertically to the tire). **PULL TAUGHT** to secure.

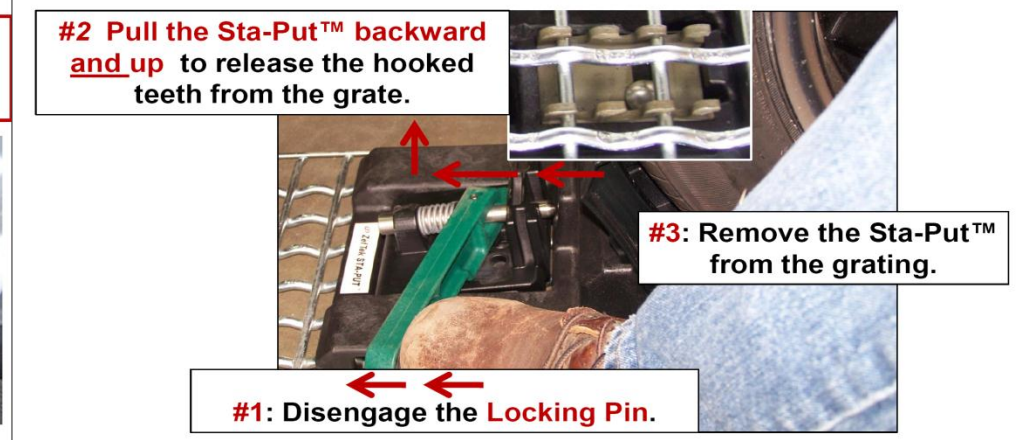


### Removal:



#### Release the Sta-Put™ from the grate.

**Removal: #1)** Push the **Release Lever** away from the wheel to disengage the **Locking Pin**. **#2)** Pull the chock away from the wheel (to release the hooked teeth from the grating). **#3)** Lift upward to remove the chock.



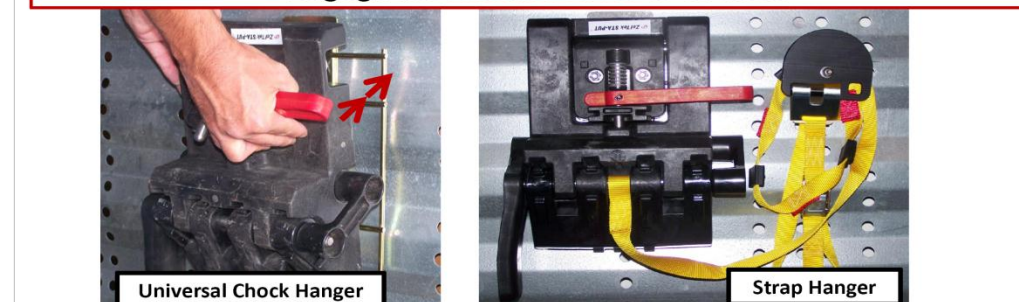
### Sta-Put™ Storage:



#### Secure the Sta-Put™ and Strap on the side screen

**Storage:** Store the device and strap on the corresponding hanger(s).

**A) Secure the Sta-Put™ Device on the Universal Chock Hanger:** Pull the **Face Plate(s)** upward, then fold to low (storage) position. Seat the first row of chock teeth into the metal rung nearest the deck. Engage the **Release Lever** to secure.



**B) Secure the Strap:** With **J-Hook** facing the side screen securely wind the strap onto the hanger, ensuring it does not lie on the railcar deck.